

OREGON WINE CLIMATE



OREGON
WINE
BOARD

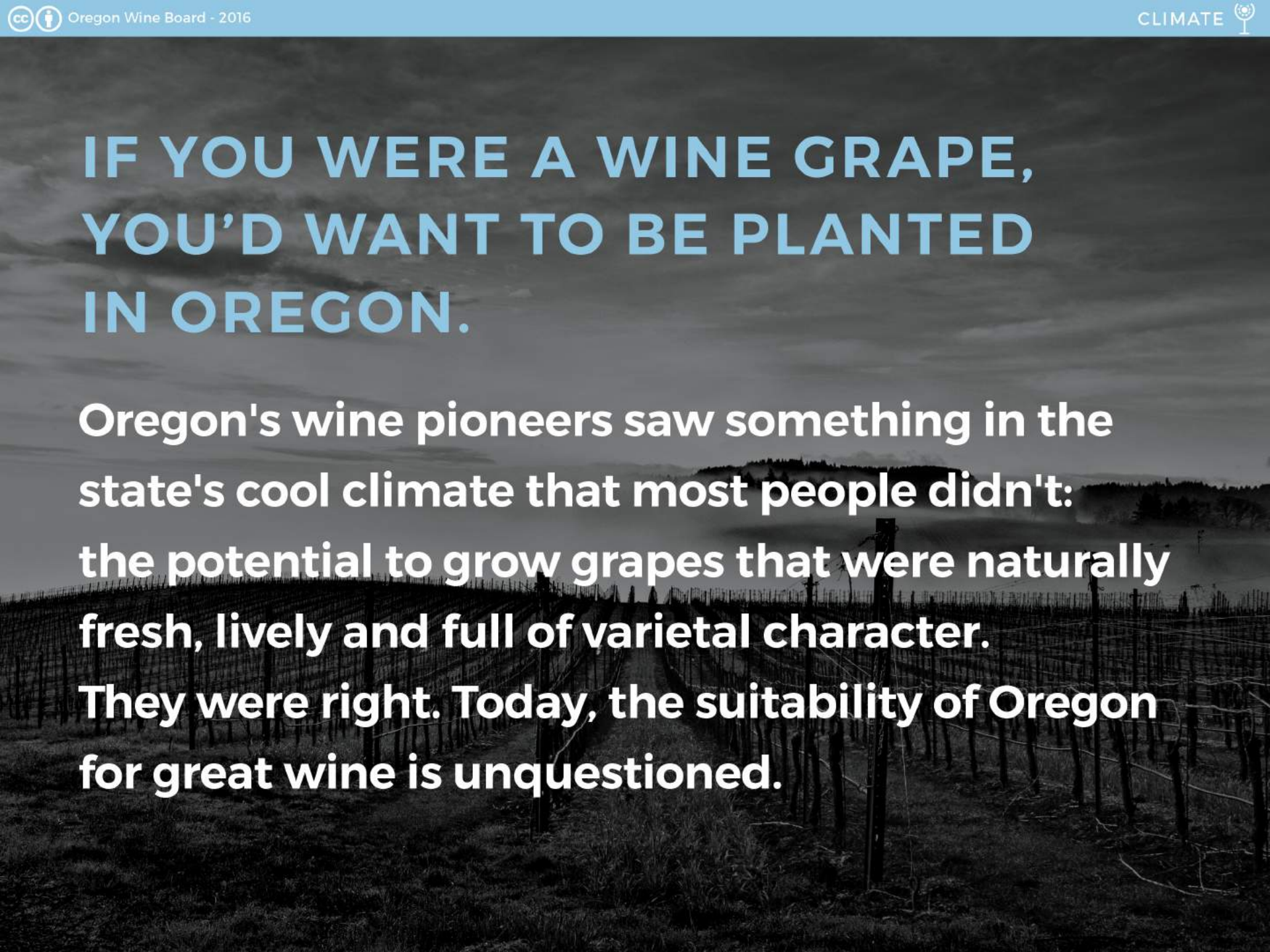
UPDATED 11.1.16



This work is licensed under the Creative Commons Attribution 4.0 International License.
To view a copy of this license, visit <http://creativecommons.org/licenses/by/4.0/>.

IF YOU WERE A WINE GRAPE, YOU'D WANT TO BE PLANTED IN OREGON.

Oregon's wine pioneers saw something in the state's cool climate that most people didn't: the potential to grow grapes that were naturally fresh, lively and full of varietal character. They were right. Today, the suitability of Oregon for great wine is unquestioned.



INTRODUCTION TO CLIMATE

The Four Components of Climate:



Sunshine



Wind



Rain



Temperature

Climate is not weather.

Climate is what you expect to happen based on past patterns,
while weather is what happens on a day-to-day basis.

“

The ideal winegrowing climate allows grapes to achieve optimum sugar and acid levels naturally timed with flavor and tannin development to maximize a given style of wine and express vintage qualities.

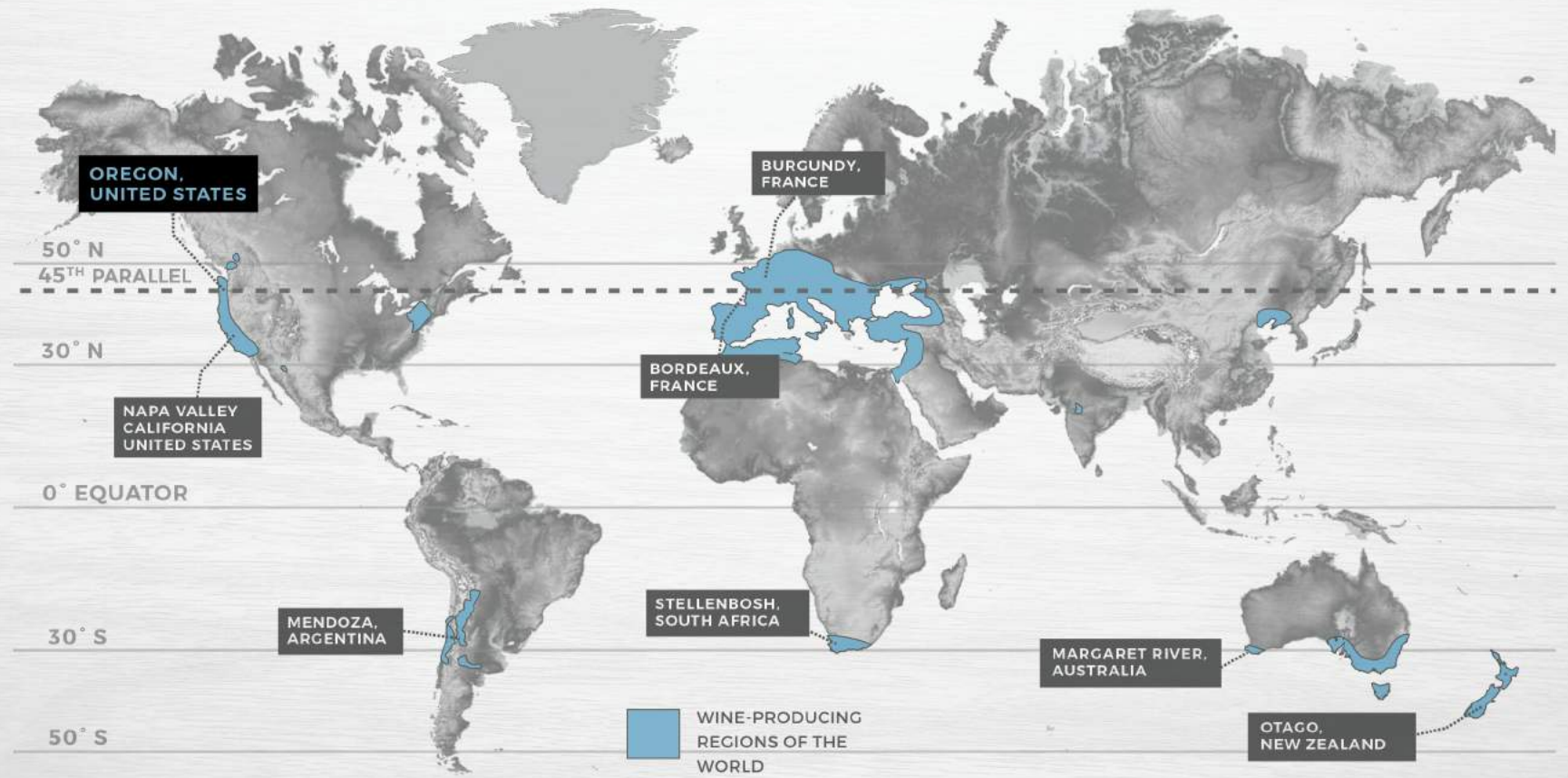
”

- DR. GREG JONES

Professor of Environmental Science and Policy
at Southern Oregon University

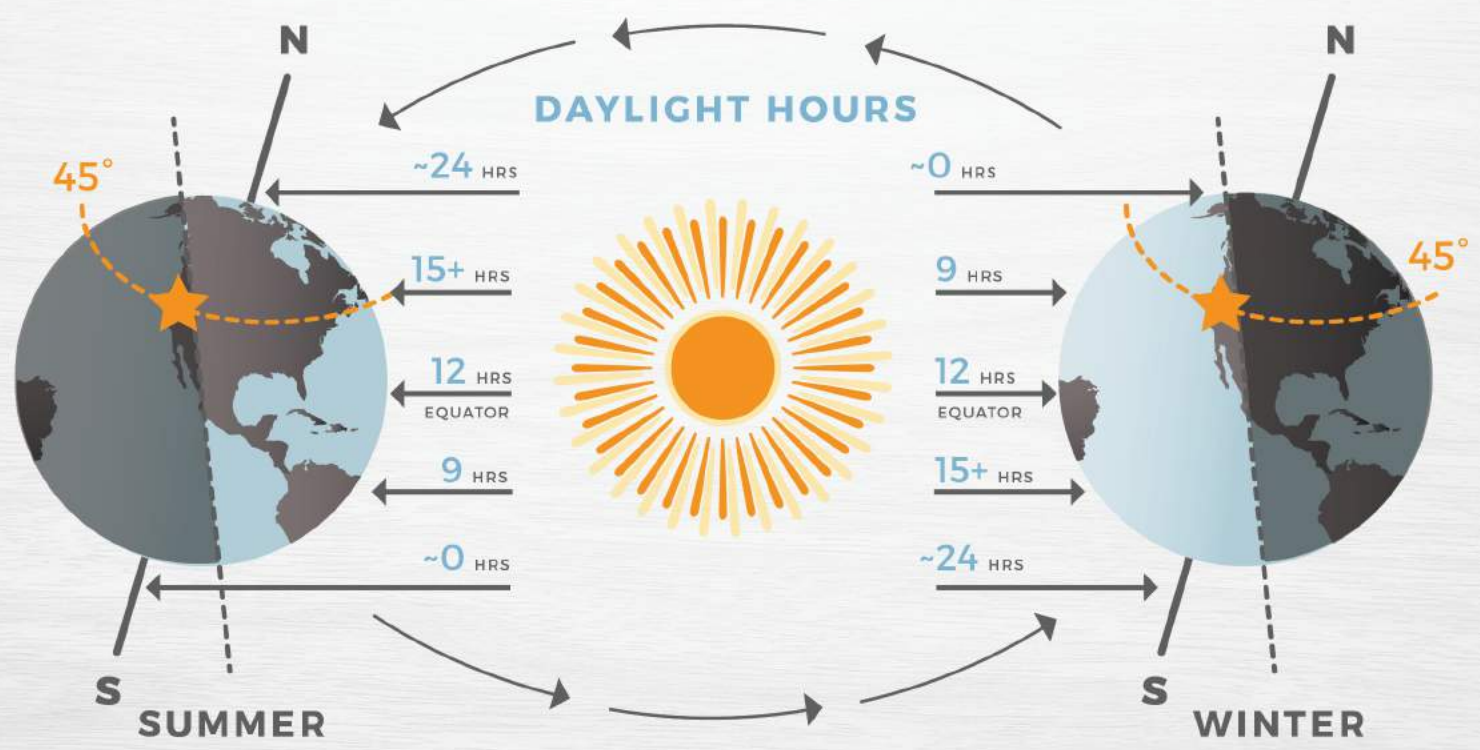
SUNSHINE

A region's latitude is the main factor in the amount of sunshine it receives during the growing season. Oregon is located within the 30-50° band of prime grapegrowing latitudes, at a northerly 42-46° N.



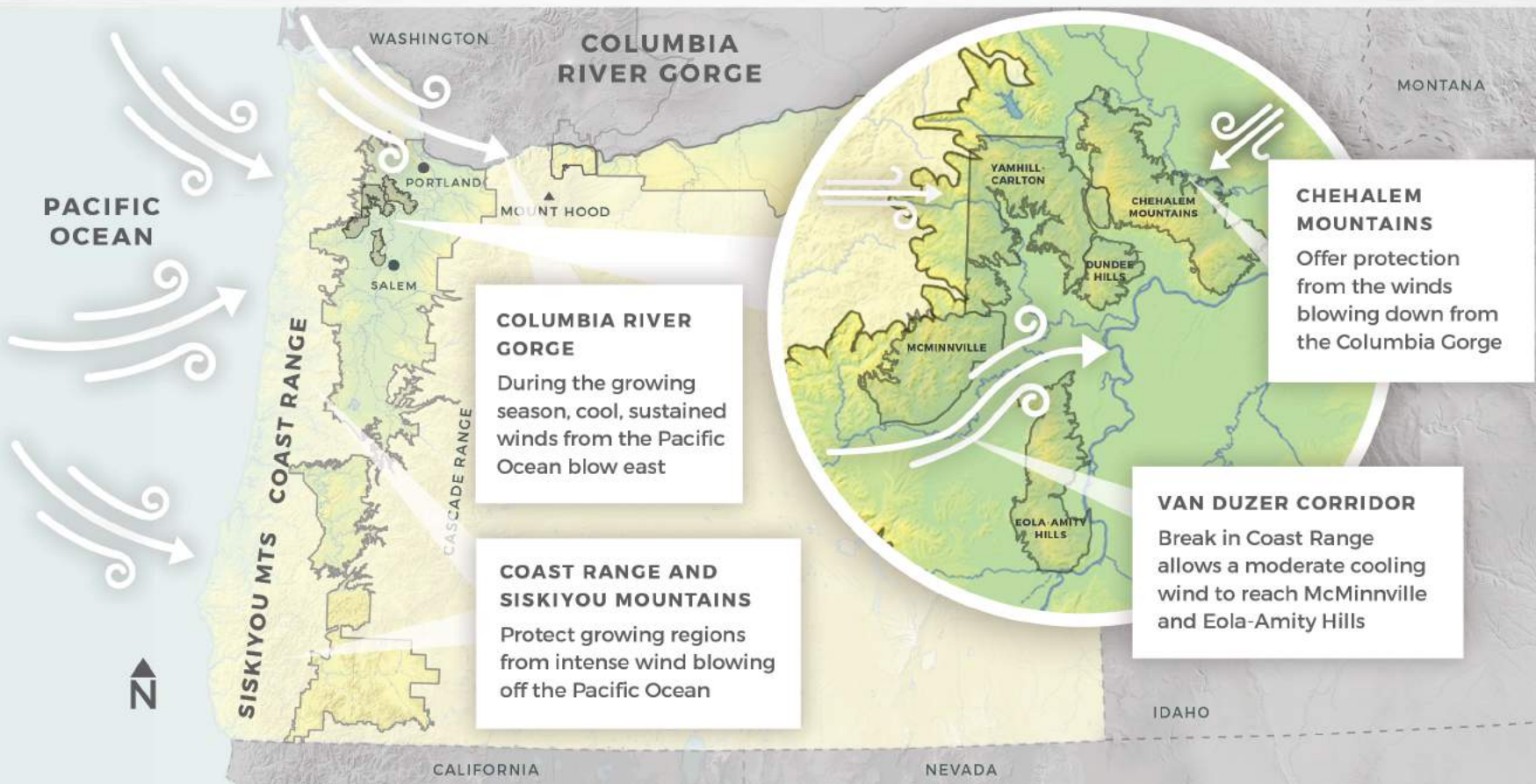
SUNSHINE IN OREGON

Oregon's relatively northern locale gives it long summer days with more than 15 hours of daylight. In a cooler growing region, this extended daylight is necessary to achieve full ripeness of the grapes.



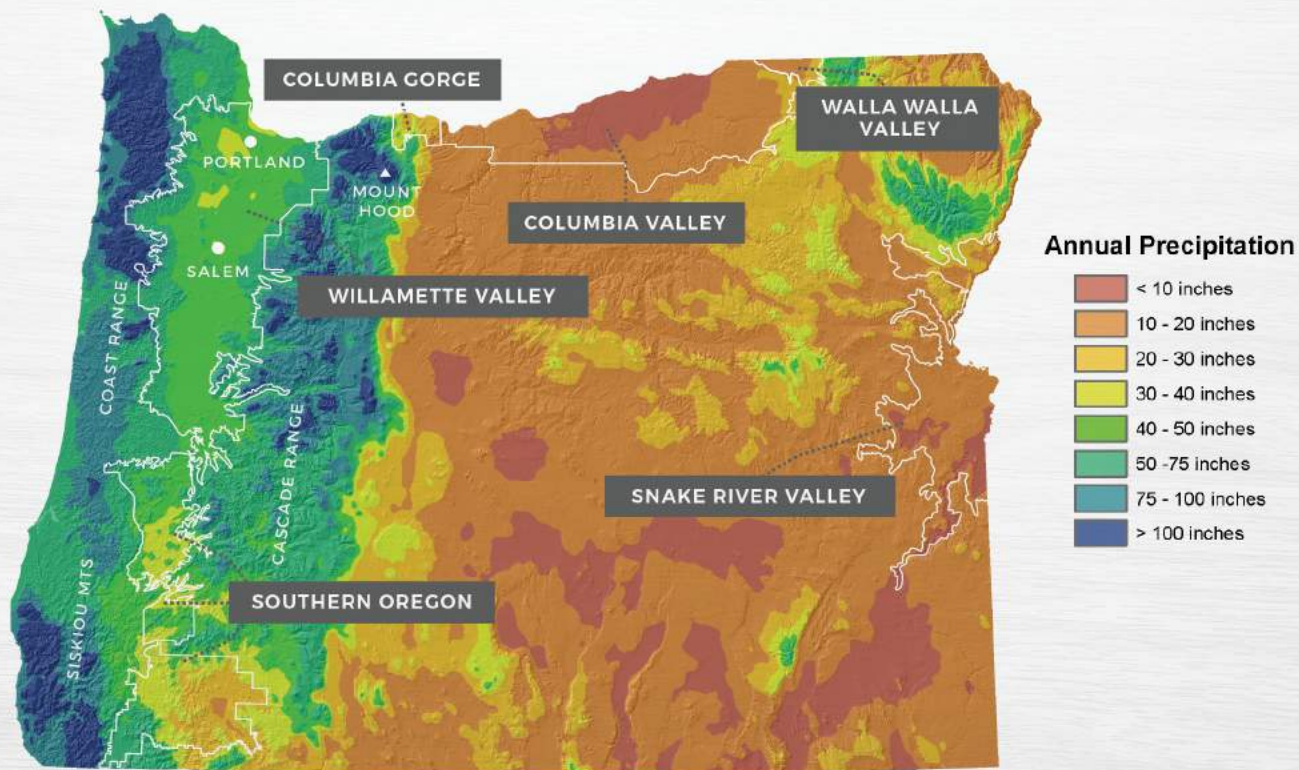
WIND IN OREGON

Oregon has two primary wind sources: the Pacific Ocean and the Columbia Gorge. Four major geological landforms influence the intensity of wind that reaches the winegrowing regions.



RAINFALL IN OREGON

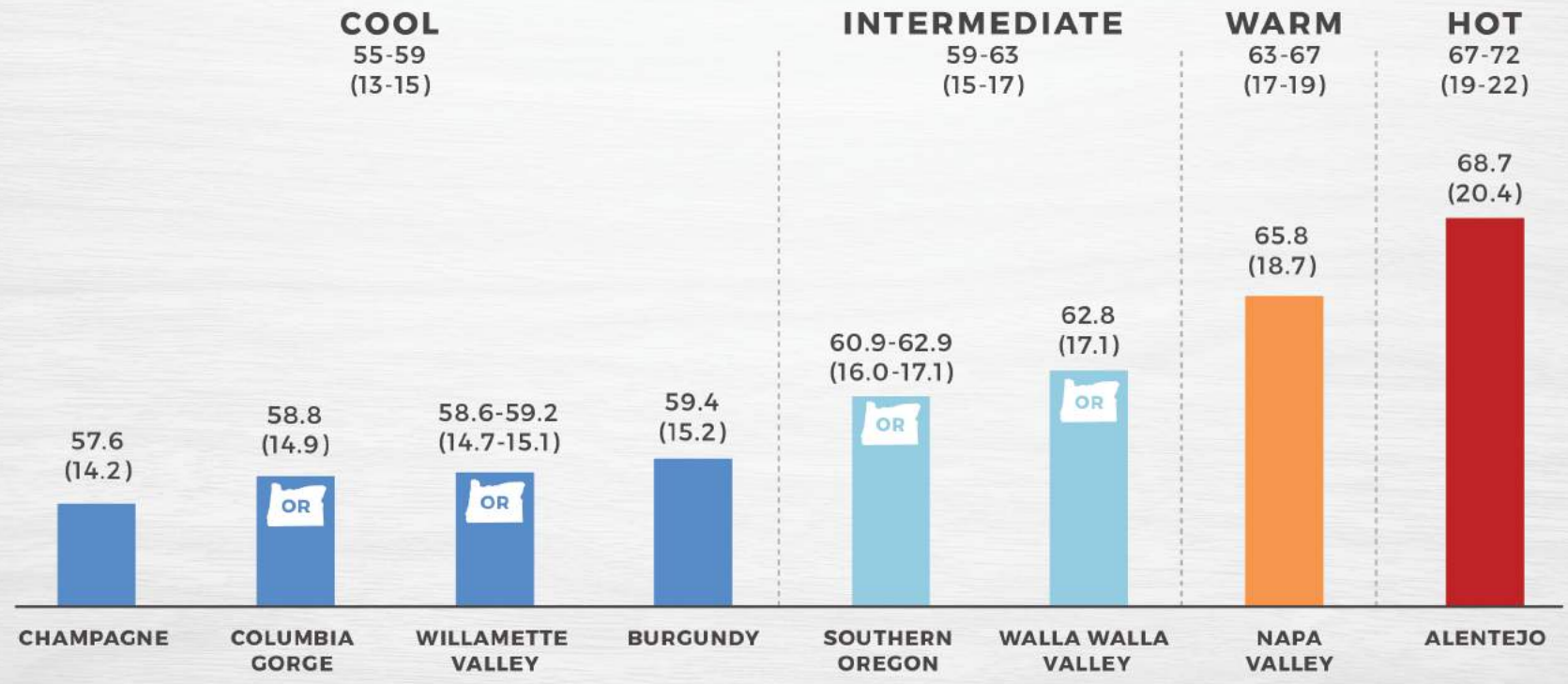
Oregon has a reputation for being rainy, but even in the rainiest areas, precipitation is concentrated into the winter months – the growing seasons are typically dry. This ensures sufficient grapevine water stress during growing seasons.



TEMPERATURE

Winegrowing regions can be divided into four climate types, based on growing season temperatures. Oregon's growing regions can all be classified as Cool or Intermediate.

AVERAGE GROWING SEASON TEMPERATURE °F (°C)



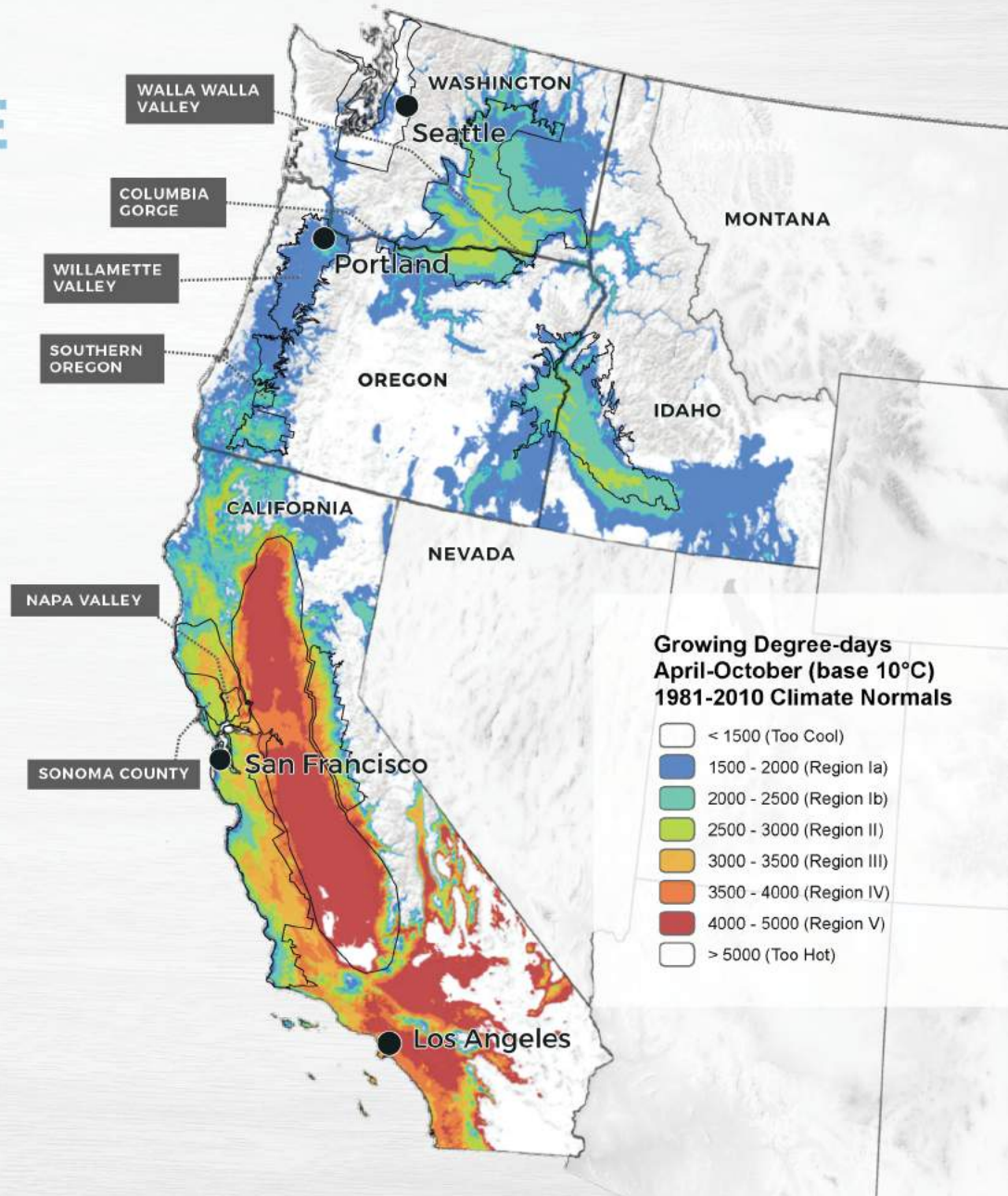
Source: Jones, G.V., Reid, R., and Vilks, A. (2012). Climate, Grapes, and Wine: Structure and Suitability in a Variable and Changing Climate pp 109-133 in The Geography of Wine: Regions, Terrior, and Techniques, edited by P. Dougherty. Springer Press, 255 pp.





TEMPERATURE

Oregon's warm days during the growing season are tempered by significantly cooler nights – the diurnal temperature swing is often 30-40 °F (16.5-22 °C). This preserves the grapes' acidity, developing complex, balanced wines.



WHAT DOES ALL THIS MEAN FOR OREGON WINE?



Long, warm days
during the growing
season produce ripe
fruit flavors

**Northerly latitude &
cooling influences**
from the Pacific Ocean
and Columbia Gorge allow
grapes to retain acidity
and lower alcohol

Wine that is
food-friendly
with excellent
aging potential

———— “ ————

**What makes the wines so good?
Start with the vines which seem to like Oregon's
combination of soils and climate. Growers and
winemakers have climbed a steep learning curve,
largely while sharing their expertise with one
another. They learned how to coax the character
and personality from grapes capable of greatness.**

———— ” ————

- HARVEY STEIMAN
Wine Spectator